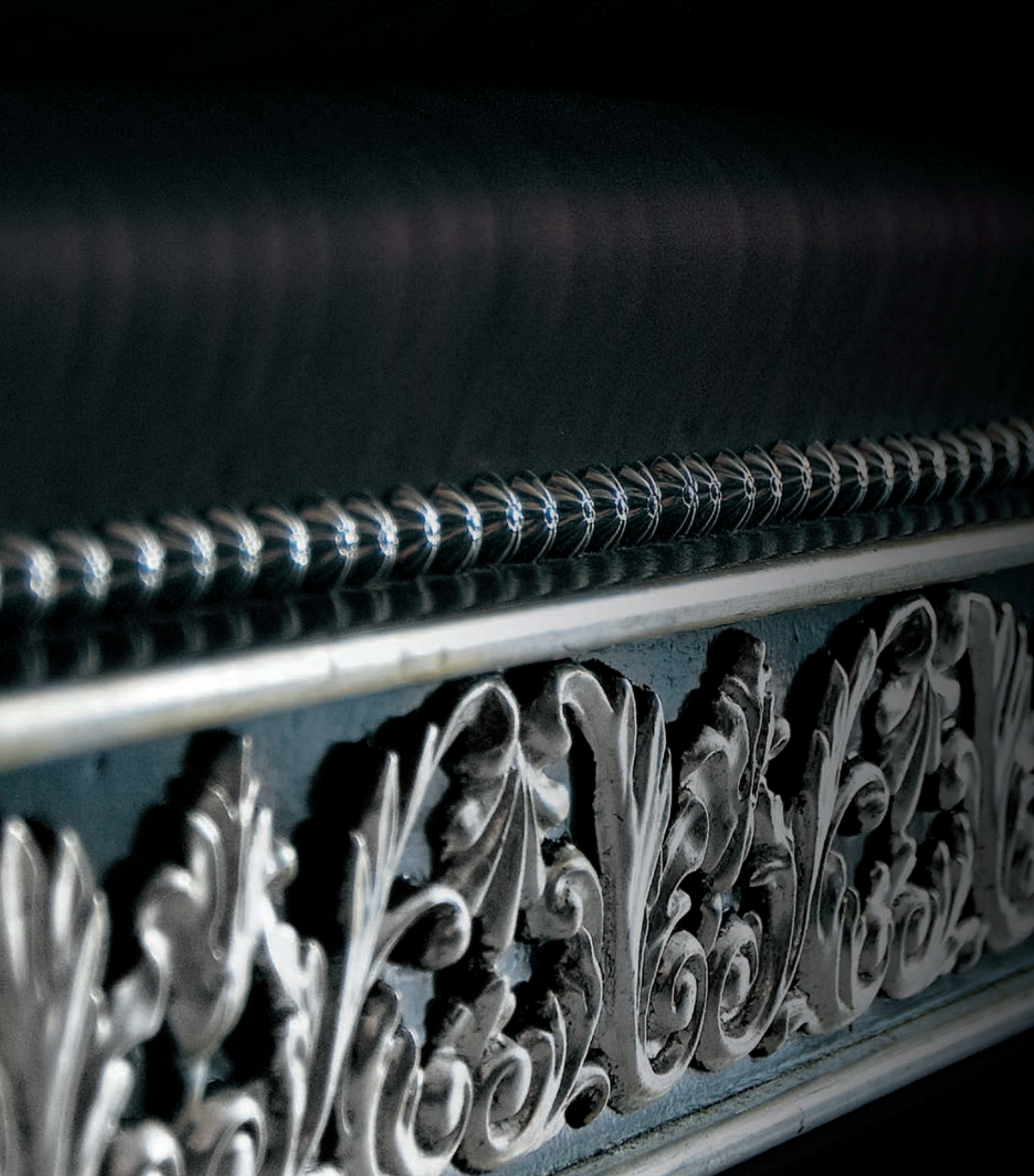


E C L E C T I C A  
*Collection*



  
FRANCESCO  
MOLON  
*Live well.*





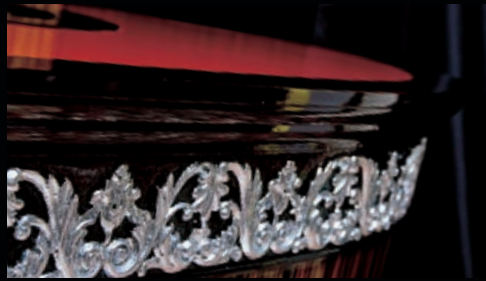
MMXXI



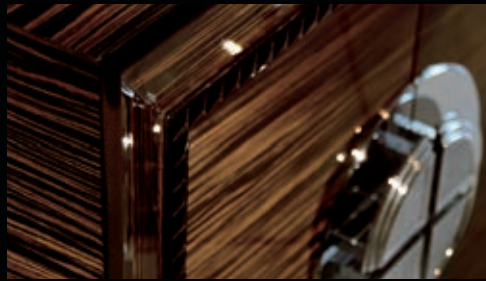
*"Beauty is in the eye of the beholder"*  
Margaret Wolfe Hungerford

  
FRANCESCO  
MOLON  
*Live well.*

Welcome



Dining



Day time



Night time





E C L E C T I C A  
*Collection*



*Live well.*

E C L E C T I C A  
*Collection*



FRANCESCO MOLON



MMXXI



Welcome

*To truly exceptional pieces blending art deco' lines and XXI  
design for the ultimate modern living*



*Live well.*







Q502.01  
"Soleil" Mirror  
W170 x D30 x H170 cm  
W66"7/8 x D11"6/8 x H66"7/8 in.

---









N510  
Console

W170 x D51 x H80 cm  
W66<sup>7</sup>/<sub>8</sub> x D20<sup>1</sup>/<sub>8</sub> x H31<sup>4</sup>/<sub>8</sub> in.





U505  
Mirrored Column "Trophy"  
W40,2 x D46,3 x H110 cm  
W15"7/8 x D18"2/8 x H43"2/8 in.



U506  
Mirrored Column "Miami"  
W32,5 x D32,5 x H110 cm  
W12"6/8 x D12"6/8 x H43"2/8 in.





W501  
Bar "ACTUALITY"  
W250 x D89 x H110 cm  
W98<sup>3</sup>/<sub>8</sub> x D35" x H43<sup>2</sup>/<sub>8</sub> in.

---

U505  
Mirrored Column "Trophy"  
W40,2 x D46,3 x H110 cm  
W15<sup>7</sup>/<sub>8</sub> x D18<sup>2</sup>/<sub>8</sub> x H43<sup>2</sup>/<sub>8</sub> in.

---

Z502  
Makassar portal with backlighted  
perspex/mirror interiors and storage  
options. Available in custom sizes.  
Here shown as  
W500 x D58,6 x H340 cm  
W196<sup>7</sup>/<sub>8</sub> x D23<sup>1</sup>/<sub>8</sub> x H133<sup>7</sup>/<sub>8</sub> in.

---



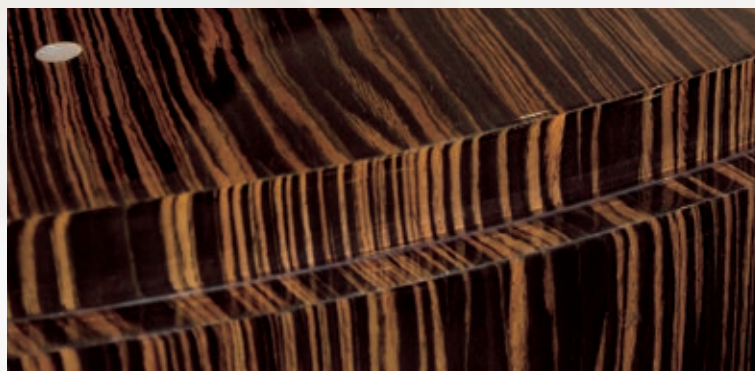








F504  
Round Table "Perla"  
W115 x D115 x H76 cm  
W45"2/8 x D45"2/8 x H29"7/8 in.



















G511  
6 Drawer Chest "Modesty"  
W160 x D53 x H75,6 cm  
W63" x D20"7/8 x H29"6/8 in.









ECLECTICA  
*Collection*

FRANCESCO MOLON







## Dining

*experience the ultimate luxury in sleek design  
and pleasurable living*



*Live well.*













F512  
Black Mirrored Dining Table "Pleasure"  
With Led Lighting  
W280 x D120 x H76 cm  
W110<sup>2</sup>/<sub>8</sub> x D47<sup>2</sup>/<sub>8</sub> x H29<sup>7</sup>/<sub>8</sub> in.







F512.01  
Makassar Top with No. 1 Extension (50 cm)  
W240 x D110 x H76 cm  
W94<sup>7</sup>/<sub>8</sub> x D43<sup>2</sup>/<sub>8</sub> x H29<sup>7</sup>/<sub>8</sub> in.



S507  
High Back Chair "Tulipè"  
W58 x D65 x H123 cm  
W22<sup>7</sup>/<sub>8</sub> x D25<sup>5</sup>/<sub>8</sub> x H48<sup>3</sup>/<sub>8</sub> in.



S506  
Swirl Eclectica Bar Stool  
W38 x D40 x H99 cm  
W15" x D15"6/8 x H39" in.

---

F510  
Metropolitan table, steel base, white sivec marble top  
W178 x D81 x H80 cm  
W70"1/8 x D31"7/8 x H 31"4/8 in.

---











C501.02  
Tortiglione Sideboard, "Serenade"  
Black Mirror Top, Inside Drawer  
W140 x D50 x H90 cm  
W55"1/8 x D19"5/8 x H35"3/8 in.







C510  
sideboard "Emotion",  
black crystal glass  
W220 x D73 x H54,5 cm  
W86"5/8 x D28"6/8 x H21"4/8 in.





C502  
Credenza "Nobilis"  
W240 x D60 x H89 cm  
W94<sup>7</sup>/<sub>8</sub> x D23<sup>5</sup>/<sub>8</sub> x H35" in.





C503  
Credenza "Emotion"  
W210 x D50 x H85 cm  
W82<sup>5</sup>/<sub>8</sub> x D19<sup>5</sup>/<sub>8</sub> x H33<sup>4</sup>/<sub>8</sub> in.





V501  
"Royally"Vitrine  
W136 x D58,5 x H256,5 cm  
W53"4/8 x D23 x H101" in.

V501.01  
"Royally"Vitrine  
with Glass Doors  
W136 x D58,5 x H256,5 cm  
W53"4/8 x D23 x H101" in.















W507  
Two Door Cabinet "Extreme"  
W95 x D95 x H268 cm  
W37<sup>3</sup>/<sub>8</sub> x D37<sup>3</sup>/<sub>8</sub> x H105<sup>4</sup>/<sub>8</sub> in.

---





L502  
"Joy" Makassar bookcase with 3  
drawers, black crystal top  
W124 x D55 x H214 cm  
W48<sup>7</sup>/<sub>8</sub> x D21<sup>5</sup>/<sub>8</sub> x H84<sup>2</sup>/<sub>8</sub> in.



U510  
Column "Rings"  
W43,5 x D43,5 x H102 cm  
W17<sup>1</sup>/<sub>8</sub> x D17<sup>1</sup>/<sub>8</sub> x H40<sup>1</sup>/<sub>8</sub> in.





D518  
Ottoman "Manhattan"  
W135 x D135 x H72,5 cm  
W53"1/8 x D53"1/8 x H28"4/8 in.









B502  
Steel Inlaid Monettiere "Apollo"  
"shown left as minibar option"

W125 x D63 x H210 cm  
W49<sup>2</sup>/<sub>8</sub> x D24<sup>6</sup>/<sub>8</sub> x H82<sup>5</sup>/<sub>8</sub> in.



ECLECTICA  
*Collection*

FRANCESCO MOLON





*Day time*

*Lose yourself in exquisite, treasured, elegant surroundings*



*Live well.*





T519  
Black Mirrored Top Side Table "Metropolitan"  
W85 x D65 x H55 cm  
W33"4/8 x D25"5/8 x H21"5/8 in.

T515  
Steel Base Makassar Coffee Table  
W140 x D80 x H45 cm  
W55"1/8 x D31"4/8 x H17"6/8 in.













P521  
Armchair "Berkeley"  
W110 x D100 x H105 cm  
W43<sup>2</sup>/<sub>8</sub> x D39<sup>3</sup>/<sub>8</sub> x H41<sup>3</sup>/<sub>8</sub> in.



D521  
Sofa "Berkeley"  
W250 x D100 x H105 cm  
W98<sup>3</sup>/<sub>8</sub> x D39<sup>3</sup>/<sub>8</sub> x H41<sup>3</sup>/<sub>8</sub> in.





ECLECTICA  
*Collection*



FRANCESCO MOLON













S519  
Capitoneed Ottoman "Clover"  
W180 x D180 x H65 cm  
W70<sup>7</sup>/<sub>8</sub> x D70<sup>7</sup>/<sub>8</sub> x H25<sup>5</sup>/<sub>8</sub> in.







P520  
Armchair "Manhattan"  
W114,6 x D95 x H85 cm  
W45"1/8 x D37"3/8 x H33"4/8 in.



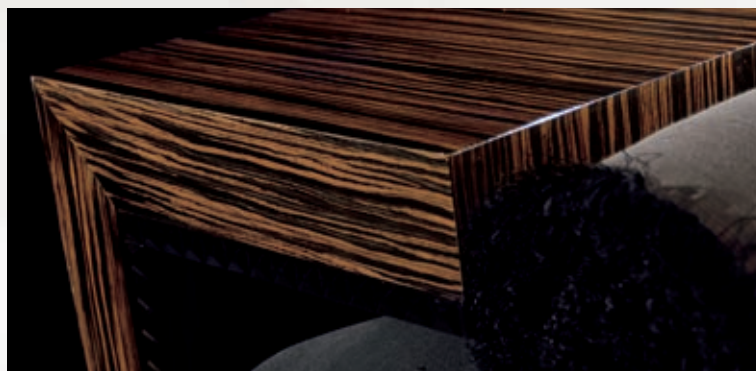
D520  
Sofa "Manhattan"  
W250 x D95 x H85 cm  
W98"3/8 x D37"3/8 x H33"4/8 in.







D509  
Upholstered Bench "Brooklyn"  
W160 x D79 x H60 cm  
W63" x D31"1/8 x H23"5/8 in.







D515  
Bench "Manhattan"  
W240 x D79 x H62,5 cm  
W94<sup>7</sup>/<sub>8</sub> x D31<sup>1</sup>/<sub>8</sub> x H24<sup>5</sup>/<sub>8</sub> in.





D511sx  
"Essential" LH sofa  
W181 x D90 x H130 cm  
W71<sup>2</sup>/<sub>8</sub> x D35<sup>3</sup>/<sub>8</sub> x H51<sup>1</sup>/<sub>8</sub> in.

T511  
Table "Essential"  
W120 x D92 x H54 cm  
W47<sup>2</sup>/<sub>8</sub> x D36<sup>2</sup>/<sub>8</sub> x H21<sup>2</sup>/<sub>8</sub> in.

D509  
Upholstered Bench "Brooklyn"  
W160 x D79 x H60 cm  
W63<sup>7</sup>/<sub>8</sub> x D31<sup>1</sup>/<sub>8</sub> x H23<sup>5</sup>/<sub>8</sub> in.





D511dx  
"Essential" RH sofa  
W181 x D90 x H130 cm  
W71<sup>2</sup>/<sub>8</sub> x D35<sup>3</sup>/<sub>8</sub> x H51<sup>1</sup>/<sub>8</sub> in.



D511.01  
"Essential" Sofa  
W230 x D90 x H130 cm  
W90<sup>4</sup>/<sub>8</sub> x D35<sup>3</sup>/<sub>8</sub> x H51<sup>1</sup>/<sub>8</sub> in.



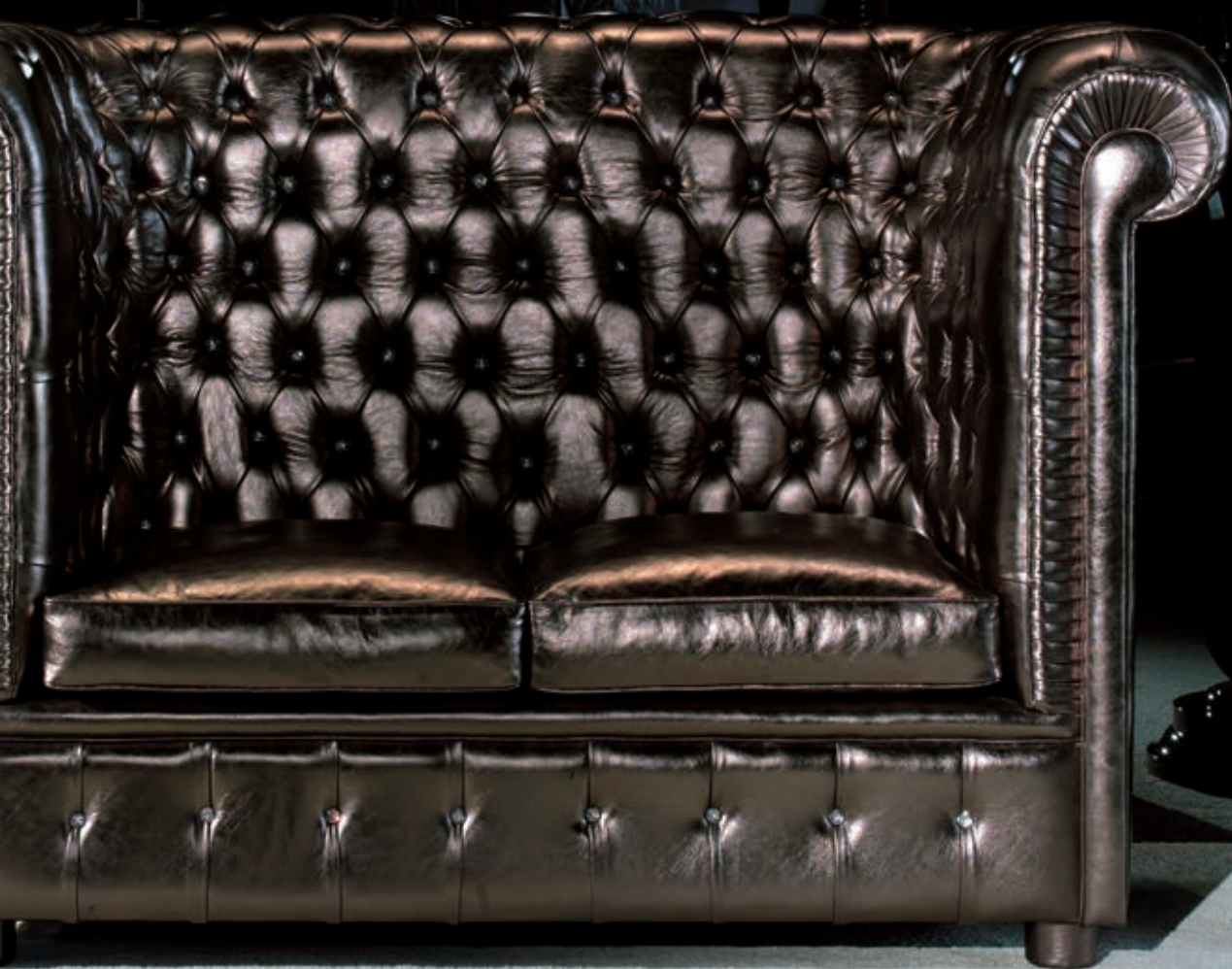


D513  
"Chester"  
Swarovski High Back Sofa  
W177 x D90 x H115 cm  
W69<sup>5</sup>/<sub>8</sub> x D35<sup>3</sup>/<sub>8</sub> x H45<sup>2</sup>/<sub>8</sub> in.

---











P504  
Armchair "Vanity"  
W138 x D94 x H84 cm  
W54<sup>3</sup>/<sub>8</sub> x D37" x H33<sup>1</sup>/<sub>8</sub> in.

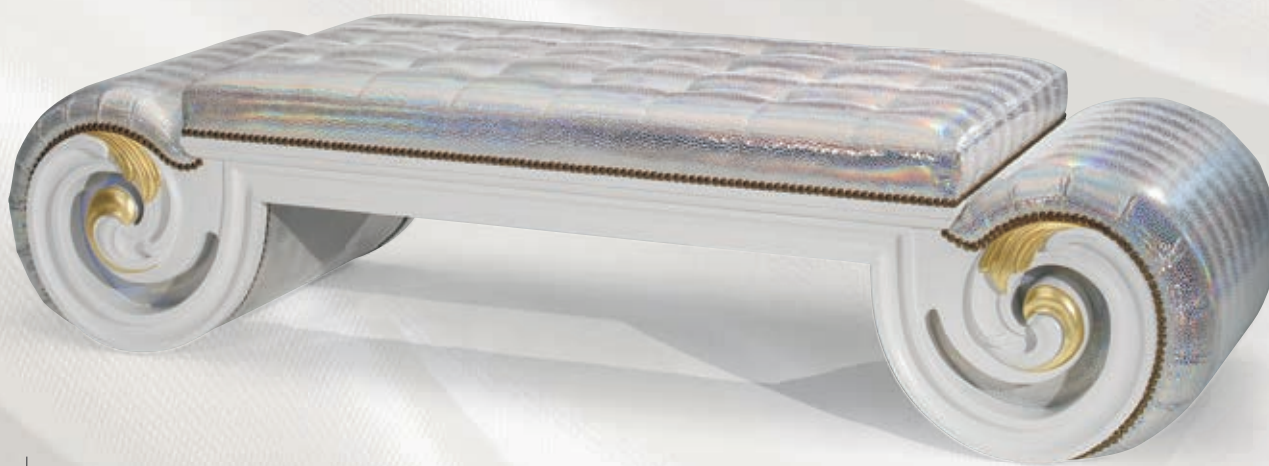


D500.01  
Sofa "Vanity"  
W200 x D88 x H85 cm  
W78<sup>6</sup>/<sub>8</sub> x D34<sup>5</sup>/<sub>8</sub> x H33<sup>4</sup>/<sub>8</sub> in.





P505  
Armchair "Silence"  
W102 x D91 x H104 cm  
W40"1/8 x D35"7/8 x H41" in.



S550  
Bench "Boucle"  
W180 x D61 x H45 cm  
W70"7/8 x D24"x H17"6/8 in.









**D500.02**  
"Vanity" shaped sofa  
W304 x D125 x H88 cm  
9"5/8 x D49"2/8 x H34"5/8 in.



**T506**  
Makassar Table "Tulipe"  
W131 x D131 x H46 cm  
W51"5/8 x D51"5/8 x H18"1/8 in.





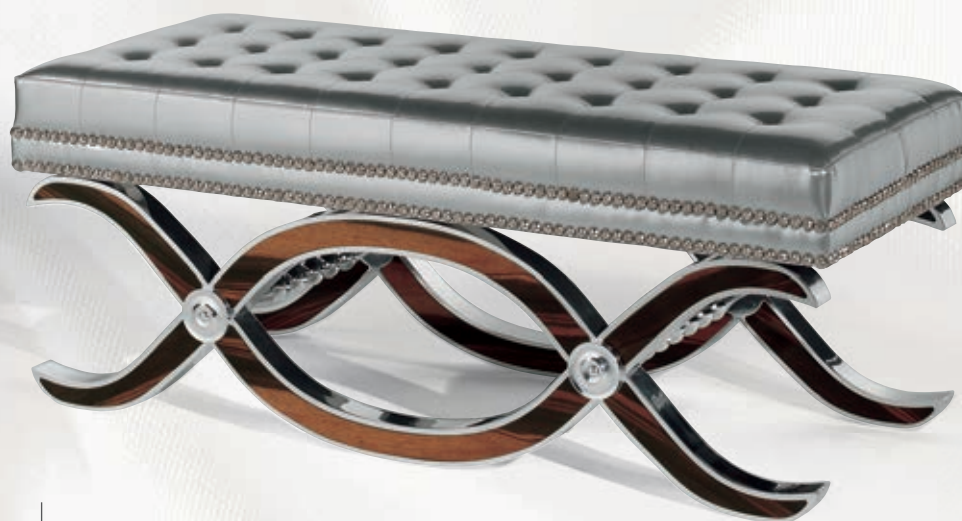
FRANCESCO MOLON

N507  
"Electra bis" shaped console  
Height 83 cm without lamps  
W275 x D83 x H229,5 cm  
W108<sup>2</sup>/<sub>8</sub> x D32<sup>5</sup>/<sub>8</sub> x H90<sup>3</sup>/<sub>8</sub> in.









S515  
Upholstered bench "Infinity"  
Steel & Makassar Base  
W115 x D45 x H45 cm  
W45<sup>2</sup>/<sub>8</sub> x D17<sup>6</sup>/<sub>8</sub> x H17<sup>6</sup>/<sub>8</sub> in.



S515.01  
Small Bench "Infinity"  
W58 x D45 x H45 cm  
W22<sup>7</sup>/<sub>8</sub> x D17<sup>6</sup>/<sub>8</sub> x H17<sup>6</sup>/<sub>8</sub> in.









S511  
Ottoman "Cube"  
W55 x D55 x H55 cm  
W21<sup>5</sup>/<sub>8</sub> x D21<sup>5</sup>/<sub>8</sub> x H21<sup>5</sup>/<sub>8</sub> in.



S517  
Ottoman "Metropolitan"  
W45 x D45 x H48 cm  
W17<sup>6</sup>/<sub>8</sub> x D17<sup>6</sup>/<sub>8</sub> x H18<sup>7</sup>/<sub>8</sub> in.



D518  
Ottoman "Manhattan"  
W135 x D135 x H72,5 cm  
W53<sup>1</sup>/<sub>8</sub> x D53<sup>1</sup>/<sub>8</sub> x H28<sup>4</sup>/<sub>8</sub> in.





D512  
Upholstered bench "Essential"  
W140 x D60 x H48 cm  
W55"1/8 x D23"5/8 x H18"7/8 in.

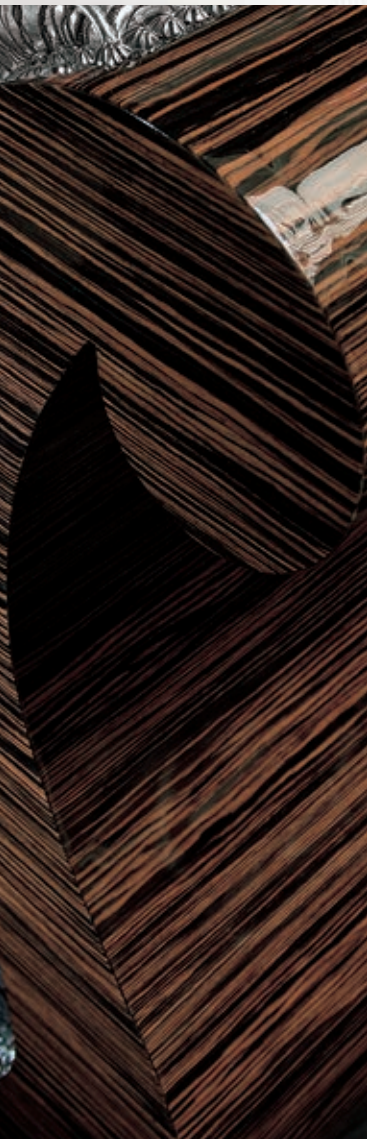


D510  
Taburè "Manhattan"  
with extractable seat  
W160 x D55 x H50 cm  
W63" x D21"5/8 x H19"5/8 in.



S501.01  
Bench "Diagonal"  
W170 x D100 x H42 cm  
W66"7/8 x D39"3/8 x H16"4/8 in.





P516  
Lazy Chair  
W68 x D100 x H106,3 cm  
W26<sup>6</sup>/<sub>8</sub> x D39<sup>3</sup>/<sub>8</sub> x H41<sup>7</sup>/<sub>8</sub> in.

P516.01  
Rocking Lazy Chair  
W68 x D100 x H106,3 cm  
W26<sup>6</sup>/<sub>8</sub> x D39<sup>3</sup>/<sub>8</sub> x H41<sup>7</sup>/<sub>8</sub> in.







D516  
Chaise Lounge "Pauline"  
W175 x D68 x H106,3 cm  
W68"7/8 x D26"6/8 x H41"7/8 in.







P522.01sx  
LH Armchair "Zeus"  
W75 x D85 x H150 cm  
W29<sup>3</sup>/<sub>8</sub> x D33<sup>4</sup>/<sub>8</sub> x H59<sup>1</sup>/<sub>2</sub> in.



P522  
Armchair "Zeus"  
W90 x D85 x H150 cm  
W35<sup>3</sup>/<sub>8</sub> x D33<sup>4</sup>/<sub>8</sub> x H59<sup>1</sup>/<sub>2</sub> in.



P522.01dx  
RH Armchair "Zeus"  
W75 x D85 x H150 cm  
W29<sup>3</sup>/<sub>8</sub> x D33<sup>4</sup>/<sub>8</sub> x H59<sup>1</sup>/<sub>2</sub> in.





P503  
Armchair "Legacy"  
W65 x D70 x H117 cm  
W25"5/8 x D27"4/8 x H46"1/8 in.



P518  
Armchair "Icon"  
W79 x D65 x H145 cm  
W31"1/8 x D25"5/8 x H57"1/8 in.



S503.02  
Ottoman "Legacy"  
W63 x D63 x H48 cm  
W24"6/8 x D24"6/8 x H18"7/8 in.





S507  
High Back Chair "Tulipe"  
W58 x D65 x H123 cm  
W22"7/8 x D25"5/8 x H48"3/8 in.



P507  
Armchair "Tulipe"  
W58 x D65 x H123 cm  
W22"7/8 x D25"5/8 x H48"3/8 in.



S506  
Swirl Eclectica Bar Stool  
W38 x D40 x H99 cm  
W15"x D15"6/8 x H39" in.



S502.01  
"Triclinium" Bar Stool  
W55 x D59 x H125 cm  
W21"5/8 x D23"2/8 x H49"2/8 in.



S509  
"Panama" Bar Stool  
W40 x D40 x H117,5 cm  
W15"6/8 x D15"6/8 x H46"2/8 in.







S514  
"Cosmopolitan" Chair  
W56 x D66 x H102 cm  
W22" x D26" x H40"1/8 in.

---



P514  
"Cosmopolitan" Armchair  
W59 x D66 x H102 cm  
W23"2/8 x D26" x H40"1/8 in.

---





ECLECTICA  
*Collection*



FRANCESCO MOLON





*Night time*

*Luxurious, precious, unforgettable unwinding time*



FRANCESCO  
MOLON

*Live well.*













G502  
4 Drawer Chest "Precious"  
Black Mirror Top  
W190 x D55 x H87 cm  
W74"6/8 x D21"5/8 x H34"2/8 in.



G503sx  
Chest of Drawers "Precious"  
W120 x D51 x H89 cm  
W47<sup>2</sup>/<sub>8</sub> x D20<sup>1</sup>/<sub>8</sub> x H35" in.



K502sx  
Nightstand "Precious"  
W86 x D45 x H60 cm  
W33<sup>7</sup>/<sub>8</sub> x D17<sup>6</sup>/<sub>8</sub> x H23<sup>5</sup>/<sub>8</sub> in.



K502dx  
Nightstand "Precious"  
W86 x D45 x H60 cm  
W33<sup>7</sup>/<sub>8</sub> x D17<sup>6</sup>/<sub>8</sub> x H23<sup>5</sup>/<sub>8</sub> in.



H510  
Bed "Manhattan"  
W195,7 x D207,5 x H229 cm  
W77"x D81"6/8 x H90"1/8 in.

---

P516  
Lazy Chair  
W68 x D100 x H106,3 cm  
W26"6/8 x D39"3/8 x H41"7/8 in.

---

K510dx  
Wall Fitted Nightstand  
W100 x D50 x H38,8 cm  
W39"3/8 x D19"5/8 x H15"2/8 in.

---

K510sx  
Wall Fitted Nightstand  
W100 x D50 x H38,8 cm  
W39"3/8 x D19"5/8 x H15"2/8 in.

---











U503.01  
"Metropolitan"  
Makassar Wardrobe Island  
with 4 drawers, glass through  
to top drawer with led lighting  
W140 x D75 x H81 cm  
W55"1/8 x D29"4/8 x H31" in.



U503  
"Metropolitan"  
Onyx Top Centre Cabinet  
with 3 Drawers  
W140 x D75 x H86 cm  
W55"1/8 x D29"4/8 x H33"7/8 in.







G506  
6 Drawers Toilette "Vanity"  
W205 x D65 x H78 cm  
W80<sup>7</sup>/<sub>8</sub> x D25<sup>5</sup>/<sub>8</sub> x H30<sup>6</sup>/<sub>8</sub> in.











ECLECTICA  
*Collection*



FRANCESCO MOLON





Y143  
Makassar Wardrobe whit Backlighted  
Perspex Interior, Remote Controlled rails,  
Sliding Shoeracks.  
custom sizes available, here shown 286 cm wide

---







pull-out shoe racks



Glass fronted Makassar Drawers





Trouser holder







G515  
Bathroom "Vanity"  
W133 x D50 x H50 cm  
W52<sup>3</sup>/<sub>8</sub> x D19<sup>5</sup>/<sub>8</sub> x H19<sup>5</sup>/<sub>8</sub> in.

---

S517  
Ottoman "Metropolitan"  
W45 x D45 x H48 cm  
W17<sup>6</sup>/<sub>8</sub> x D17<sup>6</sup>/<sub>8</sub> x H18<sup>7</sup>/<sub>8</sub> in.

---

Q505  
High Gloss Mirror Painted Black  
W84 x D7 x H179,5 cm  
W33<sup>1</sup>/<sub>8</sub> x D2<sup>6</sup>/<sub>8</sub> x H70<sup>5</sup>/<sub>8</sub> in.

---

Q505  
High Gloss Mirror Painted Black  
W84 x D7 x H179,5 cm  
W33<sup>1</sup>/<sub>8</sub> x D2<sup>6</sup>/<sub>8</sub> x H70<sup>5</sup>/<sub>8</sub> in.

---









HEADQUARTERS  
GIEMME STILE S.P.A.

VIA DEL TORRIONE, 16

36060 ROMANO D'EZZELINO (VI) - ITALY

PH. +39 0424 832600 - FAX +39 0424 832666

INFO@FRANCESCOLOLON.COM

WWW.FRANCESCOLOLON.COM

RUSSIA

FRANCESCO MOLON INTERIORS

7/10, Bolshaya Polyanka Str., build 1

119180 Moscow

Russian Federation

PH. +7 495 953 3662 / +7 499 799 8066

FAX +7 495 953 3528

info@francescomolon.ru

RUSSIA

FRANCESCO MOLON INTERIORS

14, Marata Str. 191025 St. Petersburg

Russian Federation

PH. +7 812 325 48 77

FAX +7 812 571 20 12

spb@francescomolon.ru

ARMENIA

FRANCESCO MOLON

c/o Bogart Interior Salon

15, Arshakunyats Str. 0023

Yerevan - Armenia

PH. +374 10 567 267

FAX +374 10 567 267

itk-rus@netsys.am

KINGDOM OF SAUDI ARABIA

FRANCESCO MOLON

P.O. Box: 250962 - 11391 Riyadh,

Saudi Arabia

PH. +966 01 466 46 42

FAX +966 01 466 05 62

ksa@francescomolon.com

CHINA

FRANCESCO MOLON IN BEIJING

B1/F JinBao Place No.88

JinBao Street, Dongcheng District,

Beijing P.R.C 100005

PH. 8610-85221534

FAX 8610-85221524

info@francescomolon.cn

TURKEY

FRANCESCO MOLON - ISTANBUL

Bareli Plaza Gayrettepe Mah. Ayazmadere

Cad. PazarSok No.2/4 34349 Dikilitas/ Besiktas

PH. +90 (212) 211 22 15-16

FAX +90 (212) 211 22 98

merve.paksoy@redreal.com





# OUR WORLD



UNITED STATES OF AMERICA  
GIEMME USA LLC SHOWROOM  
502 North Hamilton Street  
High Point, North Carolina 27262 – U.S.A.  
PH. +1 336 882 1886  
FAX +1 336 861 2022  
administrator@giemme-usa.com

UNITED STATES OF AMERICA  
FRANCESCO MOLON GREENWICH  
79 East Putnam Avenue Greenwich, Ct 06830  
PH. +1 (203) 863 00 05  
FAX +1 (203) 863 00 10  
administrator@giemme-usa.com

UNITED STATES OF AMERICA  
FRANCESCO MOLON FLORIDA  
(near NAPLES)  
33928 MIROMAR DESIGN CENTER  
Suite 152 10800 Corkscrew Road Estero,  
PH. +1 (239) 948 4725  
administrator@giemme-usa.com

REPUBLIC OF PANAMÁ  
FRANCESCO MOLON PANAMÁ  
Calle Aquilino De La Guardia  
16 Bella Vista  
Panamá,  
Rep. Panamá  
PH. +507 391 7577 / +507 399 60 76  
FAX +507 391 7578  
panama@francescomolon.com.pa

DEUTSCHLAND  
FRANCESCO MOLON DEUTSCHLAND GMBH  
Stilwerk kantstrasse, 17  
D-10623 BERLIN – GERMANY  
PH. +49 30 3759 2707  
FAX +49 30 3759 2713  
berlin@francescomolon.de



E C L E C T I C A  
*Collection*



  
FRANCESCO  
MOLON  
*Live well.*